

Viewing PETCT images via XERO Viewer by an image link in the medical record.

Accessing PETCT Images

STEP 1: From the chart, navigate to the **Imaging** or **Diagnostic** component on a **Workflow MPage**.

STEP 2: Select the **imaging study** to be viewed.

STEP 3: Click the **View Image** icon. 

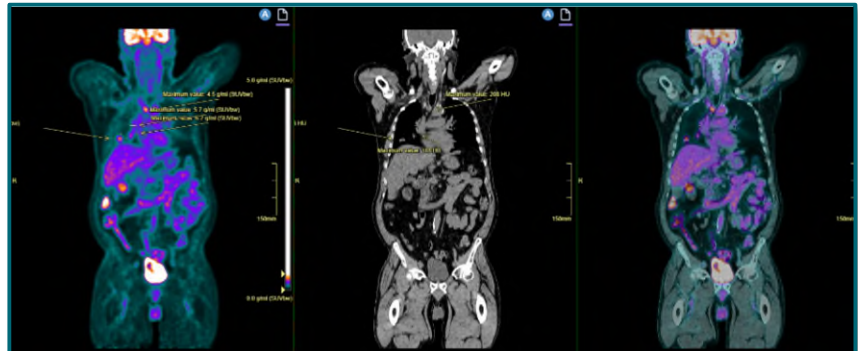
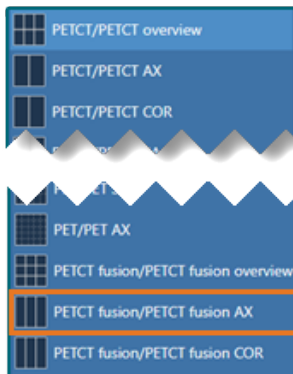
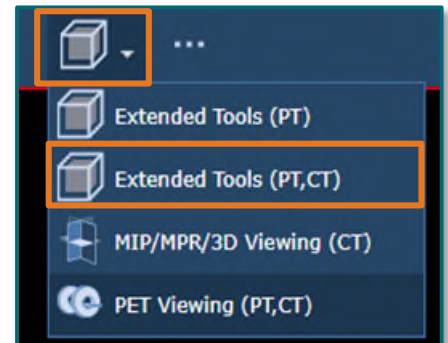
STEP 4: Click the **X** icon to close report.

STEP 5: Click the **Cube** dropdown.

STEP 6: Click **Extended Tools (PT,CT)**.

STEP 7: Click **Hanging Protocol** icon.

STEP 8: Select **PETCT fusion/PETCT**  **fusion AX.**



From the Office of Clinical Informatics

Xero Viewer

June 1, 2023

Page 2 of 2

207-973-7728 or 1-888-827-7728.