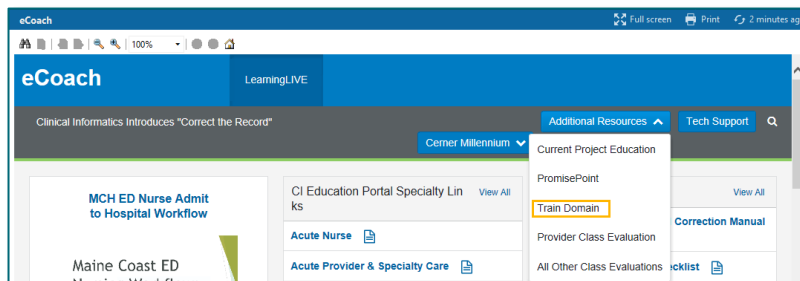


The BCMA Scenario Workbook will provide clinicians an opportunity to practice and refine skills by using a wide range of scenarios. It is important to follow the instructions below, so that the medications will fire the correct alerts on the test patients.

Accessing the Train Domain

STEP 1: Within **eCoach**, select the **Additional Resources** dropdown, then select **Train Domain**.

- eCoach is a toolbar button in the Oracle Millennium (Cerner) system where you can access education materials.



STEP 2: The train domain link opens the Oracle Millennium Storefront. Click the **PowerChart** icon.

STEP 3: Enter the **Username and Password**.

- This can be found on the *BCMA Practice Sign Ons_Patients*

Accessing Patient Chart

STEP 1: Type the **FIN** of the test patient selected.



STEP 2: Select **Patient Care** from the Assign a Relationship box. Click **OK**.

Adding Orders to a Patients Chart

STEP 1: Pull in the **Primary Care Quick Orders** mPage using the **Plus Sign** to open the **New View** tab and scroll down to select the **Primary Care Quick Orders**.

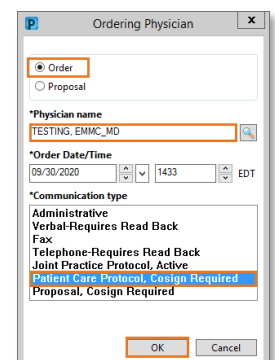


STEP 2: On the **Primary Care Quick Orders** MPage, navigate to the **Meds/Injections** Component.

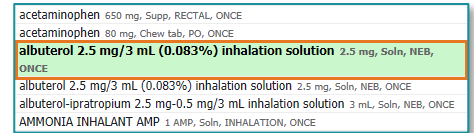


- Open the **InOffice Med Administrations** category.
- Select **acetaminophen 325, Tablet, PO, Once**.

STEP 3: In the Ordering Physician Window, select the following: **Order**, Physician Name: **Test MD, Provider**, Communication Type: **Patient Care Protocol, Cosign required**

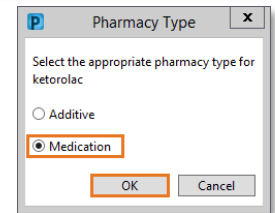


STEP 4: Select **albuterol 2.5 mg/ 3 ml (0.083%) inhalation solution**



STEP 5: Within **Injections**, select **Ketorolac 30 mg, Soln, IM, once**

STEP 6: The **Pharmacy Type** window will appear. Select **Medication**, then click **OK**.



STEP 7: Within **Immunizations**, select **M-M-R II 0.5 mL, Inj, SUBCUTANEOUS, ONCE**

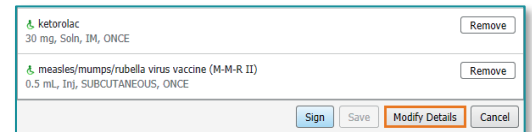
STEP 8: Click the shopping cart in the top right corner



STEP 9: Associate a diagnosis with each medication ordered.

- Clear each column.
- Select the cell for the diagnosis for each medication.
 - Acetaminophen – Headache
 - Albuterol – Asthma with exacerbation
 - Ketorolac – Other post-procedural pain
 - MMRII – Well Adult Exam

STEP 10: Select the **Modify Details** button

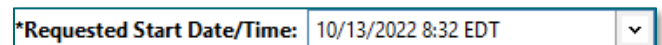


STEP 11: Select **acetaminophen**

STEP 12: In the scratch pad window, modify the dose: **replace** 325 by typing 650



STEP 13: Click the **Requested Start Date/Time** field to the current time. Type **T** in the date field and **N** in the time field to update the First Administration date and time.



STEP 14: Select **Albuterol** - update the **Requested Start Date/Time** field as above.

STEP 15: Select **ketorolac**

STEP 16: **Modify** the dose by typing **15**



STEP 17: Update the **Requested Start Date/Time** field as above.

STEP 18: Select **M-M-R II 0.5 mL, Inj** – update the **Requested Start Date/Time** field as above.

STEP 19: Click **Sign**

Please continue onto the next page to start BCMA scenarios.

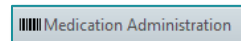
Understanding BCMA Workflow

When using Barcode Medication Administration (BCMA), the Medication Administration Wizard (MAW) and MAR will be used to determine what medications are due and when. When a RN/LPN/MA or provider are ready to retrieve the medication, the MAR should be reviewed. Scanning of the patient identifier and medication will happen **prior** to administration of the medication. This ensures the 5 rights of medication safety are in place: the right patient, right dose, right drug, right time, right route, at the right bedside.

IMPORTANT: It is important to note the single patient task list will not be used when documenting medication within the primary care practices. However, it can be used to unchart medications, when needed.

Scenario 1: Underdose Warning

- Verbally and Visually verify the correct patient chart is open by looking at the patient information in the banner bar.
- Open the **Medication Administration Wizard (MAW)** from the top toolbar within the patient's chart.
- Scan the patient identifier barcode from the test patient selected. The FIN above the barcode should match the FIN within the chart that is opened.
- **Scan Acetaminophen 325mg on your medication sheet.**



acetaminophen 325mg tablet

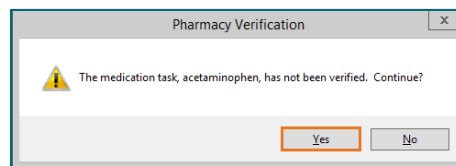


00904-1982-61

- An **underdose warning appears.**
- Under the **Qualifications** column, the indication will say underdose.
- It is important to note that when there is an order for more than one dose of the same medication to be given, **it is important to scan each barcode**, to make sure the correct medication is given to the patient.

Qualified Tasks:			
Scheduled	Mnemonic	Details	Qualifications
05/19/2020 11:30 EDT	acetaminophen acetaminophen (Tylenol)	650 mg = 2 TAB, Tablet, PO, ONCE, Indication: Fever, 05/19/2020 11:30 EDT General Recommended Maximum Daily Dosing Guideli...	Underdose

- **Scan the medication barcode** again.
- Click **Yes** to **bypass** the Pharmacy Verification screen.
- The warning will be satisfied.
- The scanned medication has a missing order detail, which is indicated by the blue circle/white x.
- Click the yellow **Result Column.**
- A new window will open.
- There is a required field highlighted in yellow.
 - Fill in the **indication: fever**
- Click **OK.**



Details	Result
650 mg = 2 TAB, Tablet, PO, ONCE, 10/02/20 1... General Recommended Maximum Daily Do...	acetaminophen 650 mg, PO

Scenario 2: Self- Administered Treatment

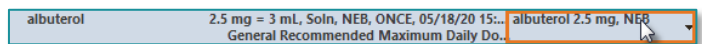
There are times when medications are patient self-administered. This can be changed within the administration window.

- From your medication sheet, **scan albuterol 2.5/3ml NEB.**

albuterol 2.5mg / 3mL NEB (UD)



00487-9501-01



- Click **Yes** to **bypass** the Pharmacy Verification screen.
- Click in the results column, even though it is not yellow.
- The ***Performed by:** will default to your name. If the patient has administered his/her own medication, please do the following:
 - Type within Performed by: **Patient, Self Admin**
- Click **OK**.

Charting for: TRAIN, NLCL1

albuterol-ipratropium
3 mL, Soln, NEB, ONCE, Indication: Wheezing, 04/23/20 11:30:00 EDT, 04/23/20 11:30:00 EDT
General Recommended Maximum Daily Dosing Guidelines: Nebulized Dose: (Adults and ...)

*Performed date / time: 04/23/2020 11:24 EDT

*Performed by: PATIENT, SELF ADMIN

Witnessed by:

Scenario 3: Administering a Medication with Missing Information



- Scan **measles/mumps/rubella vacc 0.5ml** below.
- Click **Yes** to **bypass** the Pharmacy Verification screen
- Click within the yellow Result column
- The following are required fields:
 - Lot Number: **enter 1234**
 - Manufacturer: **choose Akorn Inc**
 - Expiration Date: **enter 09/01/2024**
 - Site: **left deltoid**
- Click **OK**.

Result
acetaminophen 650 mg, PO
Indication : Fever
albuterol 2.5 mg, NEB
measles/mumps/rubella virus vaccine 0.5 mL, SU

Scenario 4: Overdose Warning

➤ Scan ketorolac 30mg / 1ml INJ Vial

ketorolac 30mg / 1 mL INJ Vial (UD)



70860-0701-01

- An Incorrect Dose Warning appears. Click OK
- Click **Yes** to **bypass** the Pharmacy Verification screen.

NOTE: The **red bold font** for this medication and the sign button dithered out, is an indication that there is an overdose of this medication.

- Click within the yellow Result column to fill in the missing charting details.
- Indication: **Pain**
- Site: **Left Deltoid**
- **Do not click OK**
- The dose will have to be adjusted to what the patient received in the office.
 - If the order was written for 15 mg, then it can be documented by changing the dose next within this window:
 - Next to Ketorolac: change **30 to 15**
- Volume: **enter .5**
- Following the order sentence within the **title bar** of this window.
- Click **Sign**

