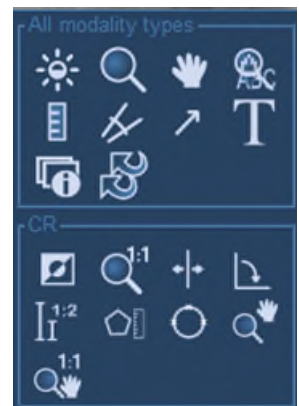


Image Area Mark Up Tools enable staff to calibrate images, take measurements, highlight, and/or annotate areas with arrows or text. Mark ups can be hidden, modified, or deleted.

Imaging Area Mark Up Tools

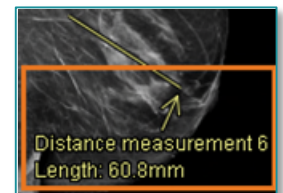
➤ Mark Up Tools Menu

- STEP 1:** Select exam from task list to display image.
- STEP 2:** Right-click anywhere on the image to access the tool menu.
- STEP 3:** Left-click to select desired tool.
- The selected tool attaches its icon to the **arrow**.
- STEP 4:** Right-click to deactivate tool.



➤ Image Measurements

- STEP 1:** Right-click anywhere on the image to access the tool menu.
- STEP 2:** Left-click the **ruler** icon.
- STEP 3:** Left-click to use tool at starting point of measurement.
- STEP 4:** Move the mouse from the measurement start point to the end point.
- NOTE:** Do not click. Hold and drag to create a measurement.
- STEP 5:** Left-click at the end point to conclude the measurement.
- Measurements display with an arrow indicating end point and measurement calculation.
- STEP 6:** Right-click to deactivate the ruler when measurement is complete.
- Imaging Mark Up Tools auto track number of measurements taken for each image.



➤ Deleting a Measurement

- STEP 1:** Right-click directly on the **measurement** line.
- STEP 2:** Select **Delete**.

➤ Configuring a Default Tool

STEP 1: Follow **Steps 1-6** above to select the ruler tool, create a measurement, and then deactivate the tool.

STEP 2: Hover over the measurement text to highlight.

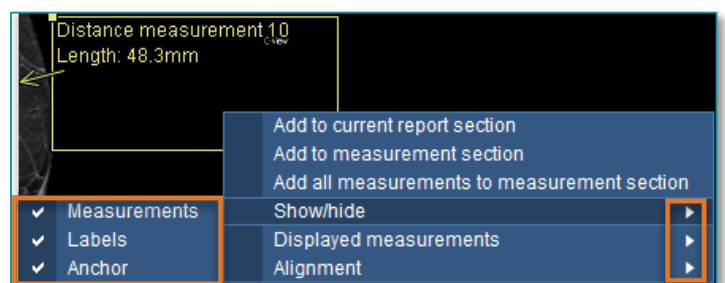
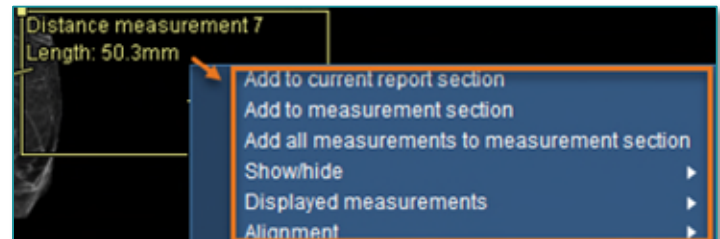
STEP 3: Left-click to enable enhanced measurement indicated by a **yellow box**.

STEP 4: Right-click for more tools.

STEP 5: Select **side arrow** to see additional options.

STEP 6: Select or deselect desired options.

NOTE: These measurements are set as the user's default and do not have to be changed again.



➤ Adding Text Annotation

STEP 1: Right-click anywhere in the image to open tools menu.

STEP 2: Left-click the **T** icon.

- The **T** icon attaches to the arrow.

STEP 3: Move the arrow on the image where text is to be added.

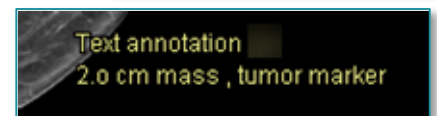
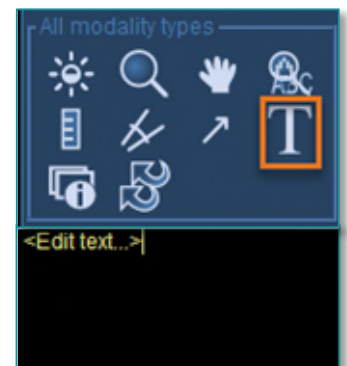
- Once **Annotation** is created, it can't be moved.

STEP 4: Left-click to open **Text box**.

STEP 5: Free text **Annotation**.

STEP 6: Right-click to deactivate **Text** tool.

- Only text annotation and comments display on image.



➤ Deleting a Text Annotation

STEP 1: Right-click **annotation**.

STEP 2: Select **Delete**.

