

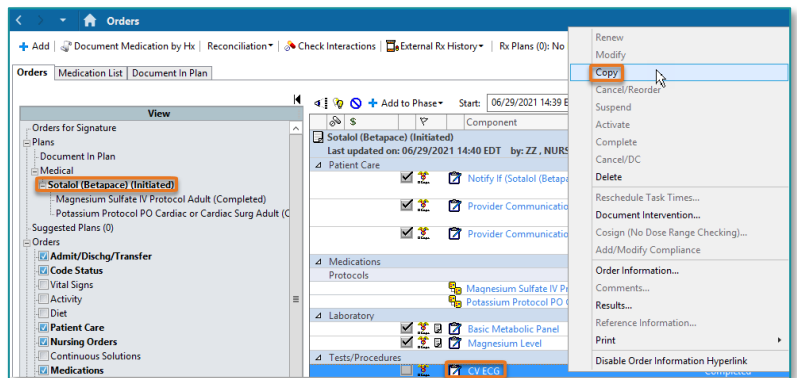
When Sotalol (Betapace) or Dofetilide (Tikosyn) is ordered via the related PowerPlan and then administered, two hours later a QTcB charting task will fire to the CareCompass. The task will instruct nurses to Copy the ECG order from the associated PowerPlan and document the QTcB value in the PowerForm. The information documented in the PowerForms is utilized by the pharmacists for dosing titration.

### Copying ECG Order from PowerPlan

**STEP 1:** Navigate to Orders and left-click the applicable PowerPlan within the View pane located to the left of the patient's orders.

- The PowerPlan should be in an **initiated** status.

**STEP 2:** Locate the CV ECG order within the Sotalol or Dofetilide PowerPlan, right-click and select Copy.



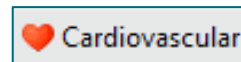
**STEP 3:** Enter the ordering provider's name and select Protocol as the Communication Type.

**STEP 4:** Once the ECG order has been placed, follow the ECG Acquisition workflow outlined in the flyer [here](#).

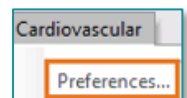
**NOTE:** The task will fire two hours after administration of the medication and become overdue 3 hours post administration.

### Confirm the Primary QTcB Value

**STEP 1:** Navigate to the Cardiovascular button in the toolbar.

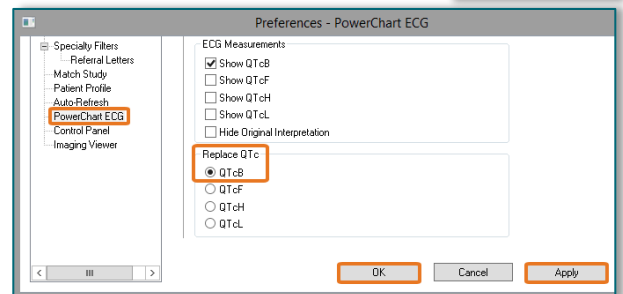


**STEP 2:** Click the Cardiovascular tab in the top toolbar and select Preferences.



**STEP 3:** Click PowerChart ECG.

**STEP 4:** Under the Replace QTc header, click the radio button to the left of QTcB. Click Apply and OK to save the settings.

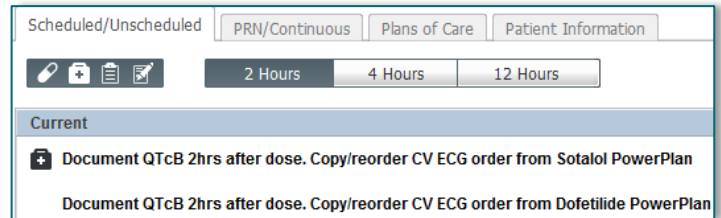


## Documenting the Task

The below steps begin **after** the nurse has re-ordered the CV ECG from the appropriate PowerForm, completed the ECG, and obtained the QTcB value.

**STEP 1:** From CareCompass, click the task and select **Document** to display the appropriate PowerForm.

- Any previous documentation will populate in the form.



The screenshot shows a software interface with several tabs: 'Scheduled/Unscheduled', 'PRN/Continuous', 'Plans of Care', and 'Patient Information'. Below the tabs are three buttons labeled '2 Hours', '4 Hours', and '12 Hours'. Underneath is a section titled 'Current' containing two task entries, each with a plus icon and a checkmark icon. The first entry is 'Document QTcB 2hrs after dose. Copy/reorder CV ECG order from Sotalol PowerPlan' and the second is 'Document QTcB 2hrs after dose. Copy/reorder CV ECG order from Dofetilide PowerPlan'.

**STEP 2:** Document the Dose, Dose Date/Time, QTcB value, QTcB Date/Time, Heart Rate, any necessary comments, and RN initials.

**STEP 3:** Sign the form by selecting the green checkmark.

**NOTE:** The task will fire 2 hours after each administration of Sotalol or Dofetilide. The process of documentation should be continued until completion of the loading dose.