

The Determinants of Health Dashboard integrates Social Determinants of Health (SDoH) models and risk scores at the point of care. The dashboard is designed to assist in providing accurate and concise ways to identify the social risks driving avoidable adverse outcomes across care settings and provide actionable clinical guidance.

Accessing HealthIntent Analytics

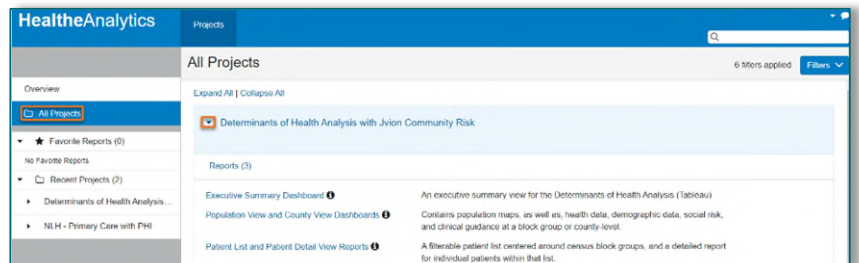
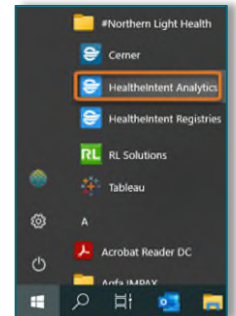
STEP 1: Click the **Windows** start icon in the task bar. Single-select the **#Northern Light Health** folder to expand the contents, then select **HealthIntent Analytics**. If prompted to enter login information, enter network credentials to open the HealthAnalytics home screen.

- Depending on the user's permissions, various project folders will display.

STEP 2: Navigate to the **All Projects** folder on the left-side of the screen.

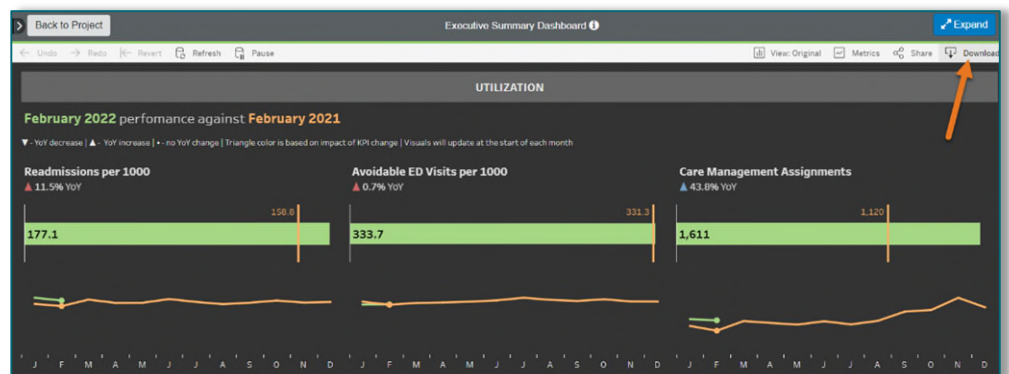
STEP 3: Expand the **Determinants of Health Analysis with Jvion Community Risk** folder by selecting the carrot.

STEP 4: The **Executive Summary Dashboard**, **Population View and County View Dashboards**, and the **Patient List and Patient Detail View Reports** are available within the folder.



Executive Summary Dashboard

The **Executive Summary Dashboard** has been moved to its own workbook. The dashboard is not interactive but provides a high-level snapshot of metrics. The dashboard can be saved or printed by selecting **Download** in the top right corner. **Image** is the recommended file format.

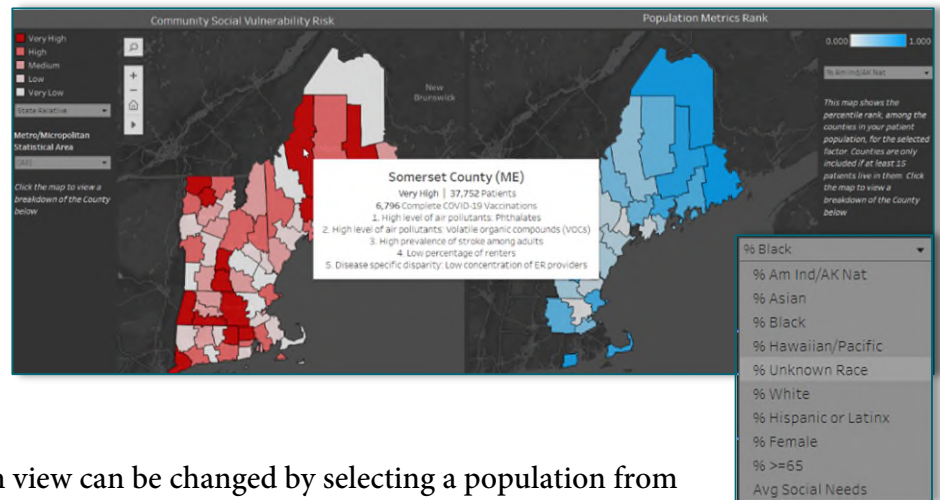


Population View and County View Dashboards

The dashboards contain population maps, health and demographic data, social risk scores and contributing factors, and actionable clinical guidance for counties within the state.

➤ **Reference tab** – Provides a general overview of data included in the dashboard.

➤ **Population View tab** – Displays the Community Social Vulnerability Risk map, which pulls data from Jvion, and the Population Metrics Rank map, which pulls data from Oracle Health (Cerner).



- The patient population in view can be changed by selecting a population from the dropdown.
- The relativity of the maps can be changed by selecting **State Relative** or **Nation Relative**.
 - **State Relative:** Compares the vulnerability score of the selected county to the rest of the counties within Maine.
 - **Nation Relative:** Compares the vulnerability score of the selected county to the rest of the United States.
- Hover over a county to display vulnerability score, count of patients, count of complete COVID-19 vaccinations, and top five risk factors contributing to the vulnerability score.

NOTE: **Contributing risk factors may vary when toggling between State Relative and Nation Relative.**

- **Metro/Micropolitan Statistical Area** filter: Used to display an area that encompasses multiple counties for comparison.
- Select a county to populate data pertaining to that county at the bottom of the screen. The county will display with small dots which represent block groups. Block groups are collections of around 600 neighborhoods which can be selected to further narrow down the data.
 - Top risk factors for the selected county will display.



- Select **Back to Population View** or **Back to County View** to navigate to the other tabs.
- Select **Return to Project** to return to the project folder.

Patient List and Patient Details View Reports

The Patient List is a filterable list displaying information pertaining to patients within a block group. The details report provides data on individual patients. Information populating to the reports is extracted from various locations within the patient's chart.

STEP 1: Select the **Refresh**  icon to display available filters.

STEP 2: **State Abbreviation**, **County**, and **Block Group** are required prompts, indicated by the red asterisk. Select **OK** to populate the report.

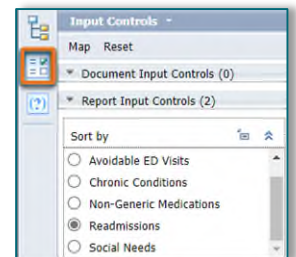
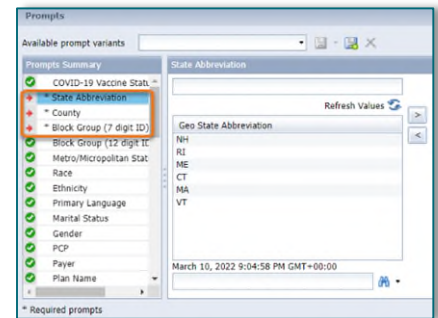
- Additional filters may be added, as desired.
- Prompts will display a green circle with a checkmark when satisfied.

STEP 3: Navigate to the **Input Controls** menu to change the sorting category.

STEP 4: If users want to add a specific patient to the list, enter the patient's Last Name, First Name, and Birth Date.

STEP 5: Select the patient's **Empi ID** hyperlink to view the **Patient Detail View**. The **Patient Detail View** opens in a new tab.

NOTE: Patients enrolled in a Northern Light Health Plan will not flow to the dashboard, as those patients have been marked as sensitive.



Patient Detail View									
Block Group Risk Factor 1 Low rate of preventative services among elderly women		Block Group Risk Factor 2 High prevalence of stroke among adults		Block Group Risk Factor 3 Health disparity: Low concentration of general practitioners		Block Group Risk Factor 4 Disease specific disparity: Low concentration of ER providers		Block Group Risk Factor 5 High percentage of individuals receiving public assistance or food stamps/SNAP	
Patient Name	Gender	Age	Marital Status	Race	Ethnicity	Primary Language	PCP	Care Manager (Past 18 Months)	
			DIVORCED	Am Ind/AA Not	Not Hispanic or Latinx	English	Unknown	Yes	
Condition List Diabetes Heart Disease Depression Hypertension					Sub Condition List Heart Disease - IVD Heart Disease - CAD				
Recorded Social Needs					Condition Displays				
Screening Date	Child Care Risk	Feels Lonely Or Isolated	Food Didnt Last Past Yr	Food Insec Resource Gndc Prov	Housing Problems	Housing Situation Today	Needs Assist W Daily Actvs	Transportation Barrier	
5/23/21	Unknown	Never	Never	Unknown	None of the above	Housed	Not needed	No	
3/12/21	Unknown	Unknown	Unknown	Unknown	Unknown	Housed	Unknown	Unknown	
Available ED Visits			Readmissions			Prescribed I			
Date	Diagnosis Codes	Diagnosis Display	Date	Initial Service Dates	Primary Diagnosis Codes	Primary Diagnosis Display	Service Date	Dosage	Drug Primary Display
2/26/21	E07.1, E07.1, E07.1, E07.1	Hypo-osmolality and hyponatremia, Hypo-osmolality and hyponatremia, Hypo-osmolality and hyponatremia					11/16/21	100 milligram	lisdacame
							11/16/21	200 milligram	propofol
							11/16/21	500 milligram	metf, ODMet
							11/16/21	5 milligram	esclerispram
							5/23/21	100 milligram	isotret
							5/23/21	10 milligram	aml, ODPine 10 mg oral tablet
							5/23/21	25 milligram	metoprolol
							5/23/21	6.25 milligram	carvediol